

THE
SOUND
EXPERIENCE



•schlagwerk

NEW PRODUCTS
2023/24



RUDIMENTS

> The Rudiments series is our ecological successor to the X-One series due to the sustainable SPL body. The resource-efficient Cajon is sonically equal to its predecessor and offers even more low-end punch. The entry level series from Schlagwerk offers several designs and sizes alongside typical handcrafted quality "made in Germany."



CP82 CAJON RUDIMENTS FINGERPRINT - SIZE L

Playing surface: 3-ply birch with design print
Body: SPL, approx. 30 x 30 x 50 cm
Sound: controlled Snare and Base with a good low end from SPL body

CP83 CAJON RUDIMENTS FINGERPRINT - SIZE M

Playing surface: 3-ply birch with design print
Body: SPL, approx. 30 x 30 x 45 cm
Sound: controlled Snare and Base with a good low end from SPL body



CP85 CAJON RUDIMENTS STYLES - SIZE L

Playing surface: 3-ply birch with design print
Body: SPL, approx. 30 x 30 x 50 cm
Sound: controlled Snare and Base with a good low end from SPL body

CP86 CAJON RUDIMENTS STYLES - SIZE M

Playing surface: 3-ply birch with design print
Body: SPL, approx. 30 x 30 x 45 cm
Sound: controlled Snare and Base with a good low end from SPL body



CP80 CAJON RUDIMENTS NATURE

Playing surface: 3-ply birch
Body: SPL, approx. 30 x 30 x 50 cm
Sound: controlled Snare and Base with a good low end from SPL body



CP90 CAJON RUDIMENTS VINTAGE WALNUT

Playing surface: SC6 Vintage Walnut design veneer
Body: SPL, approx. 30 x 30 x 50 cm
Sound: Bass with a good low end, lively Snare



CP91 CAJON RUDIMENTS HARD COAL STRIPES

Playing surface: SC6 Hard Coal Stripes design veneer
Body: SPL, approx. 30 x 30 x 50 cm
Sound: Bass with a good low end, lively Snare

CAJON QUICK ASSEMBLY KIT

> CAJON QUICK ASSEMBLY KIT - BUILD IT YOURSELF, PLAY TOGETHER

Unbeatably affordable for anyone who wants to build their own instrument: Schlagwerks Cajon construction kit in 45 cm or 50 cm height. The most successful Cajon assembly kit of recent years. Thanks to the precisely prefabricated parts, DIY is not a problem. With the tension belts and quick-drying adhesive included, it doesn't take hours to get it done. Great fun to build at home with your kids or for yourself. Due to the precision that goes into every Schlagwerk product even the sound is great.



CBA20S CAJON QUICK ASSEMBLY KIT „LARGE“

Size: assembled, approx. 30 x 30 x 50 cm
Playing surface: 3-ply birch
Body: SPL
Snare effect: 40 strands

CBA10S CAJON QUICK ASSEMBLY KIT „MEDIUM“

Size: assembled, approx. 30 x 30 x 45 cm
Playing surface: 3-ply birch
Body: SPL
Snare effect: 20 strands



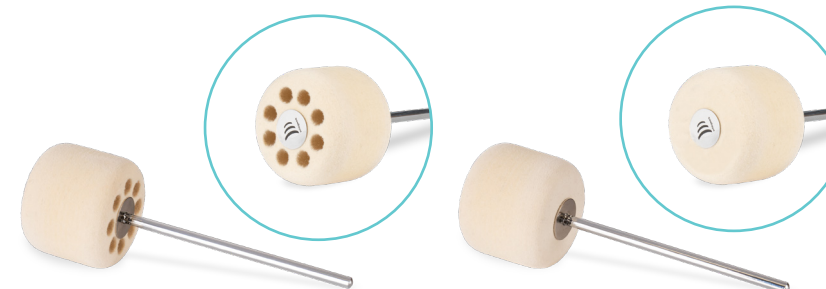
CBA30SW CAJON ASSEMBLY KIT PRO WENGE

Cajon construction kit with elegant Wenge (design veneer) playing surface
Size: assembled, approx. 30 x 30 x 50 cm
Playing surface: 3-ply birch, Wenge design veneer
Body: SPL
Snare effect: 40 strands

BEATER

> BE40 & BE45 BEATER

The hard felt Drum-Beater brings a warm sound and a massive punch and is very suitable for normal Bass-Drums and E-Drums. This beater is too hard for our Bass Cajon and normal Cajons and therefore unsuitable.



BE40 SUPERPUNCH FELT BEATER HARD

Size: approx. 19,5 x 6,5 cm
Weight: approx. 125 gr.

BE45 FATPUNCH FELT BEATER HARD

Size: approx. 19,5 x 6,5 cm
Weight: approx. 143 gr.



BE34 UNIVERSAL BEATER

The hard universal Drum-Beater has a powerful, bright bass and is very suitable for our Bass Cajon, normal Bass-Drums and E-Drums. Compatible with every standard Bass-Drum pedal. This BE34 is too hard for our normal Cajons and therefore unsuitable.

BE34 UNIVERSAL BEATER

Size: approx. 20 x 5 cm
Weight: approx. 85 gr.

PERCUSSION EFFECTS

THE CHICK

Whether on a drum set, cajon, handpan, cajinto or move box, The Chick can be played by hand, with sticks, rods, brushes or mallets. It produces a crystal clear „chick“ sound even at low volumes. Easy mounting with Velcro or magnet allows free placement on a variety of instruments and makes The Chick one of our most versatile add ons. A great addition to any percussion setup.

TC22 THE CHICK

Measures: approx. 230 x 50 x 10 mm

Material: Multilayer birch & Fabric hose

Technology: Attachment with Velcro/Fleece or magnet

Magnet Attachment



FRAME CHICK

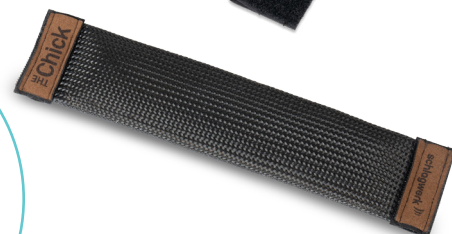
The Frame Chick is the same construction as The Chick, but with its frame clamps it is specially designed for frame drums, but can also be attached to other instruments with Velcro.

RTCH FRAME CHICK

Measures: approx. 230 x 50 x 10 mm

Material: Multilayer birch & Fabric hose

Technology: Attachment with Velcro/Fleece or frame clamps



HANDPAN

Schlagwerk instruments have earned a reputation of low maintenance and great sound through build quality. With our new handpans, it is no different. The enthusiasts using our instruments can expect a perfect sounding, carefully crafted, durable instrument giving you the joy of playing without worrying about the handling. Our handpans fit that bill more than ever. Experience a variety of different, hand tuned, exquisite instruments that offer more than you expect in perfect tune. Co-designed by expert craftsmen at Harmonic Art and Schlagwerk, we have created a line of perfect handpans with distinctive construction processes, a multi-material body and a maintenance-free surface to deliver a new generation of handpans. To ensure that we had to make a few things different than other instrument makers.



Our Schlagwerk Handpan with 12 / 15 tone fields consists of 8 tone fields on the top and 4 / 7 tone fields on the bottom. The series sounds enchanting, soothing and relaxing.

HP12DKU KURD HANDPAN

D-Minor Tuning alias KURD

Top: D/ A, A#, C, D, E, F, A **Bottom:** F, G, G, A#

Dimensions: 21 1/2", 54 cm

Weight: 4.5 Kgs

HP12CAM AMARA HANDPAN

C# Tuning aka Amara

Top: C#/ G#, A, B, C#, D#, E, G# **Bottom:** E, F#, F#, A

Dimensions: 21 1/2", 54 cm

Weight: 4.5 Kgs

HP15D CHROMATIC D HANDPAN

Chromatic D

Top: D/ A, C, D, E, F, G, A **Bottom:** G#, A#, C#, D#, F#, G#, A#

Dimensions: 21 1/2", 54 cm

Weight: 4.5 Kgs

HP15CS CHROMATIC C# HANDPAN

Chromatic C#

Top: C#/ G#, A, C#, D#, E, F#, G# **Bottom:** G, A#, C, D, F, G, A

Dimensions: 21 1/2", 54 cm

Weight: 4.5 Kgs



Other Available Tunings:

HP8DM - 8 Tone NATURAL / KURD D-Minor

HP8D7 - 8 Tone DOMINANT / CELTIC 7 D-Minor with C as 7th

HP8DI - 8 Tone INTEGRAL natural D-Minor Scale without the G

HP8DSA - 8 Tone SABYE D-Major without the G.

HP8EQ - 8 Tone EQUINOX E-Minor natural scale w/o the A / tuned in 432Hz.

Dimensions: 21 1/2", 54cm diameter | 10", 25cm height

Gross Weight (Kgs): 8,8

Packaging dimensions (L, W, H): 60x60x35cm

incl. storage cotton pouch, transport backpack and safety cover



HANDPAN ADD ONS

Our Handpan Add Ons expand the sound experience and bring percussive elements into the Handpan playing. Of course with the usual extraordinary Schlagwerk quality. The simple magnet attachment allows flexible positioning on the handpan.

HPBBD / HPBBN HANDPAN BUZZ

With the fast-responding Handpan Buzz, Schlagwerk presents the first handpan add on with snare effect, bringing an additional sound option to handpan playing.



Measures: approx. 280 x 47 mm
Technology: 12 snare spirals
Magnet attachment

HPCP PAN CLAP

The Pan Clap produces a warm, woody "clap" sound. Free placement on the pan, while the flexible design adapts to the pan shape.



Measures: approx. 230 x 45 x 75 mm
Material: Multiply birch
Technology: Flexible construction
Magnet attachment

HPCH PAN CHICK

The Pan Chick expands your handpan with a warm „chick“ sound, which is somewhere between the „chick“ sound of a hihat, ritual rattles, cha cha nuts or shakers. Vertically between the tone fields the sound unfolds best.



Measures: approx. 210 x 56 x 15 mm
Material: Cotton tube
Technology: Flexible construction
Magnet attachment

Magnet Attachment

HPSK2 PAN SHAKER

The Pan Shaker is an easily playable shaker that is magnetically attaches to the handpan. It is a perfect addition.



Measures: approx. 45 x 45 x 22 mm
Material: Aluminium and Elasticband for sound isolation
Technology: Single chamber system
Magnet attachment

HANDPAN ACCESSORIES

The Schlagwerk handpan stands carry the pan safely in style. Only German components, made in Gingen/Fils.



The classic tripod with oiled beech round rods is available in two versions. The stand is very easy to fold and unfold and offers a comfortable playing height, for either playing sitting or standing.

HPT80

Material: Oiled Beech
Tripod Height: approx. 58 cm
Playing height: approx. 73 cm

HPT100

Material: Oiled Beech
Tripod Height: approx. 86 cm
Playing height: approx. 105 cm



HPP SOUNDPLATE

The panplate supports the pan on a flat base on a very low profile. The circular support disc acts as a sound reflector and throws back sound into ambient room. Thus, the stand is super suitable for playing with full sound spectrum even on the floor. When playing on the lap, clothing always absorbs some of the sound. The pan rests on three points without pressure to the body, so no resonance is choked due to tension. Fits all commercially available pans.

HPP

Playing height with pan: approx. 30-35 cm

EINKLANG

> We offer a wide spectrum from the small, clear metallic POWER CHIME to the big, earthy tones of the wooden BIG BOM in our EINKLANG programm. Our precisely tuned instruments allow relaxing enjoyment, but are also established elements of scientific healing in music therapy.



INFINITY GONG

Our Infinity gongs are a whole new kind of instrument. They do not only look elegant, but unfold their sound across an entire room by a single stroke. In the initial phase after striking the gong, the fundamental tone with its overtone spectrum is audible. However, the overtones quickly fade out and the fundamental note dominates and begins gradually to pulsate. A unique experience for meditation, sound or music therapy. The handpicked and precision-tuned aluminum tubes are suspended floating in a smoked oak frame.



IG126 INFINITY GONG SUN 126,2 Hz
Length: approx. 194,5 cm
Weight: approx. 5,5 kgs



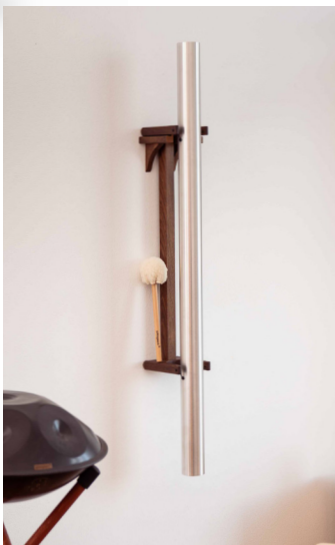
IG136 INFINITY GONG EARTH/OM 136,1 Hz
Length: approx. 187,5 cm
Weight: approx. 5,3 kgs



IG221 INFINITY GONG VENUS 221,2 Hz
Length: approx. 146 cm
Weight: approx. 4,3 kgs

incl.
Gong mallet

IGWH INFINITY GONG WALLMOUNT
optionally available



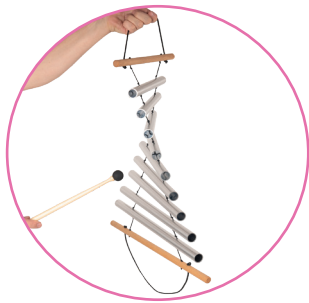
EINKLANG

> HRS7 + HRS9

In our hand tubes, the individual overtones to the fundamental are playable and audible separately. With the cord handle, these tubes can be moved freely through the room, played and swung. This saturates even a larger room with a wonderful, pure tapestry of sound. Selected aluminum tubes, hand-knotted suspension along with the precise tuning, give our tubes their unique sound.



HRS7 HAND TUBES VENUS
PURE HARMONICS
Size: 54 x 69 x 3 cm
Weight: approx. 1,43 Kgs



HRS9 HAND TUBES C-PENTA
Size: 59 x 65 x 3 cm
Weight: approx. 1,65 Kgs



MA102
Rubber head mallet included

60102 LOG DRUM, 10 TONES, F-PENTA

One of the most outstanding features of the 10 tone drum, the original Schlagwerk Log Drum is its versatility. This instrument is tuned to an F-Pentatonic scale spanning two octaves. Virtuosity and joy in experimenting are just what is needed here.



60102
Measures: approx. 60 x 20 x 18 cm
Playing surface: Padouk
Resonance box: Solid alder
Tuning: 10 tones, f - g - a - c' - d' - f' - g' - a' - c'' - d''
Pentatonic tuning for intuitive playing
Recommended mallets: MA102 / MA103



FRAME DRUM

RTS51CD COAST DRUM:

With our tunable Coast Drum, a regular playable frame drum is now available from Schlagwerk. The filling simulates the rolling of waves on the beach or the roaring surf on the coastal cliffs. The drum with a diameter of 50 cm, goatskin and mesh material is perfect for use in the therapeutic field, for sound baths, meditations or in classical frame drum play. The finely tuned mixture of glass and steel balls in between the natural skin and mesh material can also be adjusted in quantity by means of a side screw if necessary.



RTS51CD COAST DRUM
Size: Ø 50 cm / ca. 20"
Skin: goatskin
Incl. tuning key
Frame height: 8 cm
Frame: 7-ply glued beech wood

RTS51D & RTS61D FRAME DRUM BLACK DOT

The Frame Drum Black Dot is designed to appeal to both frame drum players and drummers. Distinct basses and controlled muted overtones open up a new world of sound. With the wooden cross and our additionally available drum cross holder RTH10, the Frame Drum Black Dot can be played as an extension of a drum set with sticks and rods as the Dot protects the goatskin. The drums can be tuned using tuning screws integrated within the frame, and allow the subtlest nuances of sound and tone volume.



RTS51D or RTS61D
Size: Ø 50 cm / ca. 20" or
Size: Ø 60 cm / ca. 24"
Skin: goatskin
Incl. tuning key and holding cross
Frame height: 8 cm

FRAME DRUM ADD ONS

RTBZ FRAME BUZZ:

With the fast-responding Frame Buzz, Schlagwerk presents its proven Buzz series for frame drums with a diameter ≥ 40 cm. The Frame Buzz is mounted on the outside of the drum with the supplied clamps and suitable for frames up to approx. 16mm thickness.



RTSK MAGSHAKE

The MagShake is the perfect groove addition for all skin drums. The easy attachment of the shaker pair with +/- magnets allows flexible positioning on almost any drumhead and instantly provides an additional sound option. The shaker pair of the MagShake creates a fine shaker sound with its aluminum shell with elastic band, while both hands are still free. The shaker can be played directly or is vibrating via the drum skin.

RTSK MAGSHAKE

Measures: approx. 45 x 45 x 44 mm
Material: Aluminium, Elasticband for sound isolation
Technology: Single chamber system
Magnet attachment
Frame: 7-ply glued beech wood



RTBZ FRAME BUZZ

Measures: approx. 280 x 65 mm
Material: Oak
Technology: 12 snare spirals
Attachment with Frameclamps
Flexible construction



INFINITY RAIN TOWER

INFINITY RAIN TOWER:

Rain and water have always been the source of life on our planet. The rippling water of a stream or the soft pattering of rain has an incredibly relaxing effect on us humans. Our Infinity Rain Towers produce exactly this pleasant pattering of a summer rain over a longer period of time. We build three sizes of these wonderfully relaxing sound objects from oiled ash and cork pads. Once turned upside down, they provide a soothing rain backdrop of sound for 5-22 minutes, depending on the size. Perfect for sound journeys, sound baths, meditation, yoga or sound healing sessions. Easy to combine with other sounds as a sonic canvas. The elegant appearance and minimalist design will grace any room. An asset in every way!



IRT90 ZEN Waterfall

Sound length: approx. 22 min.
Material: Oiled ash, natural cork
Measures: approx. 90 x 16,5 x 14,2 cm
Weight: approx. 7,2 Kgs



IRT70 Summerrain

Sound length: approx. 12 min.
Material: Oiled ash, natural cork
Measures: approx. 70 x 12,2 x 10,8 cm
Weight: approx. 3,8 Kgs



IRT50 Raindance

Sound length: approx. 5 min.
Material: Oiled ash, natural cork
Measures: approx. 50 x 12,2 x 10,8 cm
Weight: approx. 2,25 Kgs



BAGS

Practical, well padded Schlagwerk bags that provide optimal protection and easy transport of the instruments.

TA4 Fram Drum Bag:

The lined nylon bag for frame drums up to 40cm offers optimal protection for the drum and is also a comfortable transport option. Also suitable for **14" snares with up to 5.5" height.**



TA4 FRAME DRUM BAG

Measures: approx. 49 x 18 cm
For frame drums with approx. Ø 40 cm.
For 14" snares up to 5,5" height.
Padding: 25 mm

Also suitable
for snare drums

TA8 Log Drum Bag:

The custom-made bag for our log drums offers optimal protection. It has handles and a carrying strap. With additional storage space for mallets and accessories.



TA8 LOG DRUM BAG

Measures: approx. 64 x 27 x 25 cm
For Log Drums with approx. 60 x 20 x 18 cm
Padding: 25 mm



schlagwerk)))

Percussion handmade in Germany

Schlagwerk GmbH | Brückenstrasse 10 | 73333 Gingen / Fils | Germany | Phone: +49 (0)7162 - 948 964 0
info@schlagwerk.com | www.schlagwerk.com